

PG310

Light Curtain

PG310

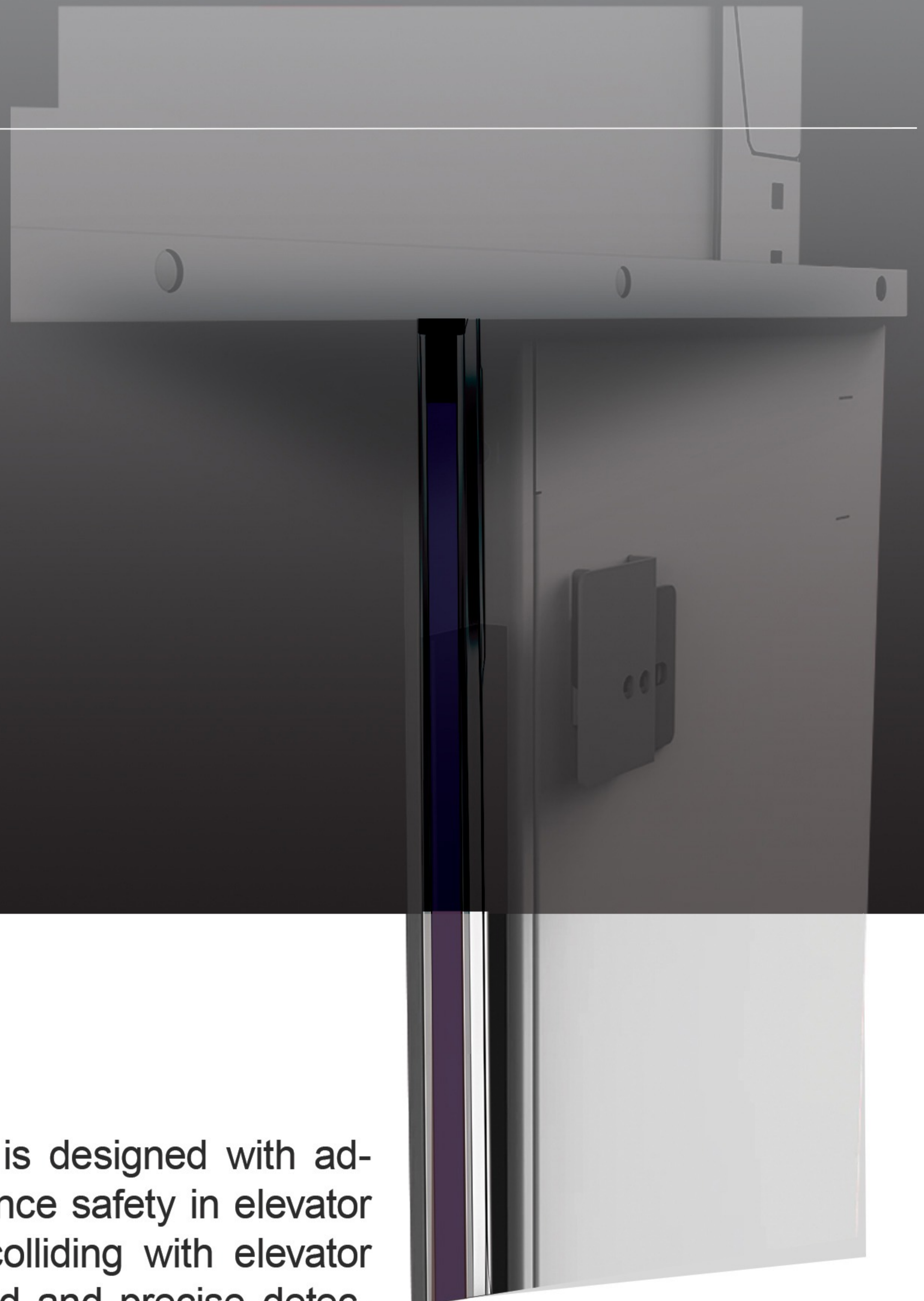
Light Curtain

The TurboCell PG310 light curtain is designed with advanced infrared technology to enhance safety in elevator systems and prevent users from colliding with elevator doors. With its high response speed and precise detection, this device is an ideal choice for various environments.

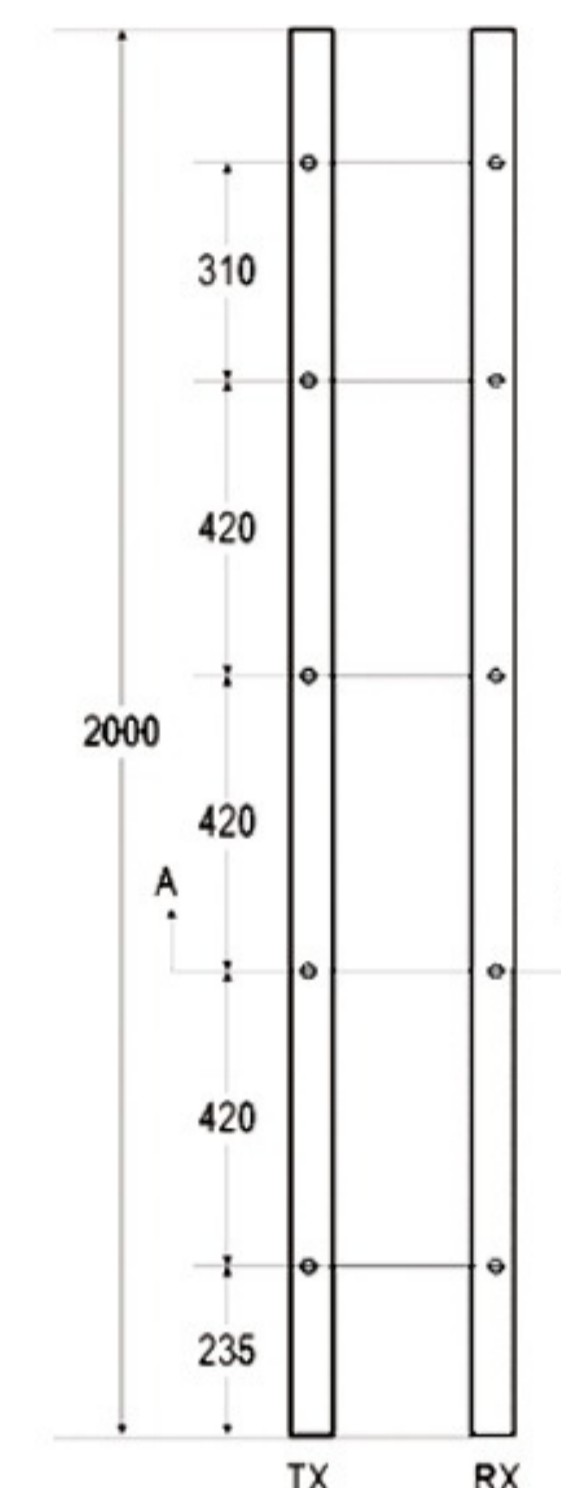
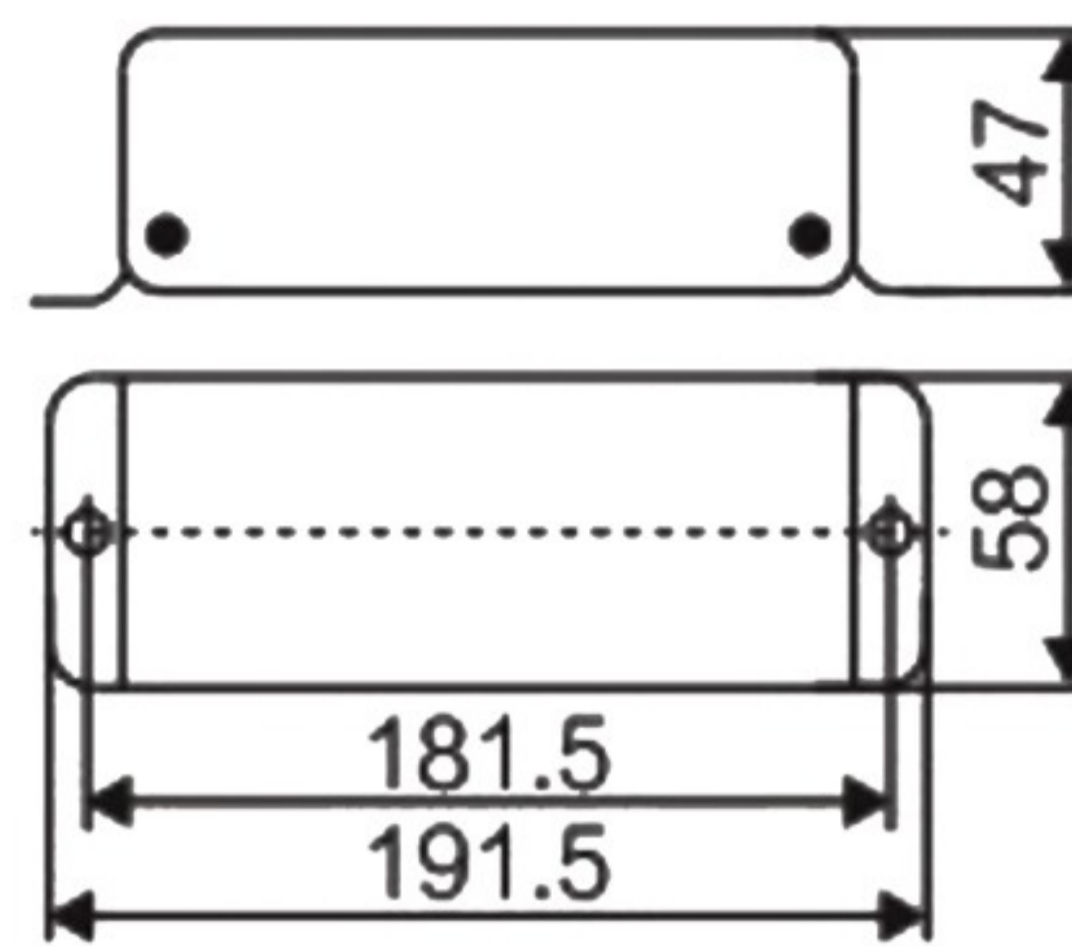
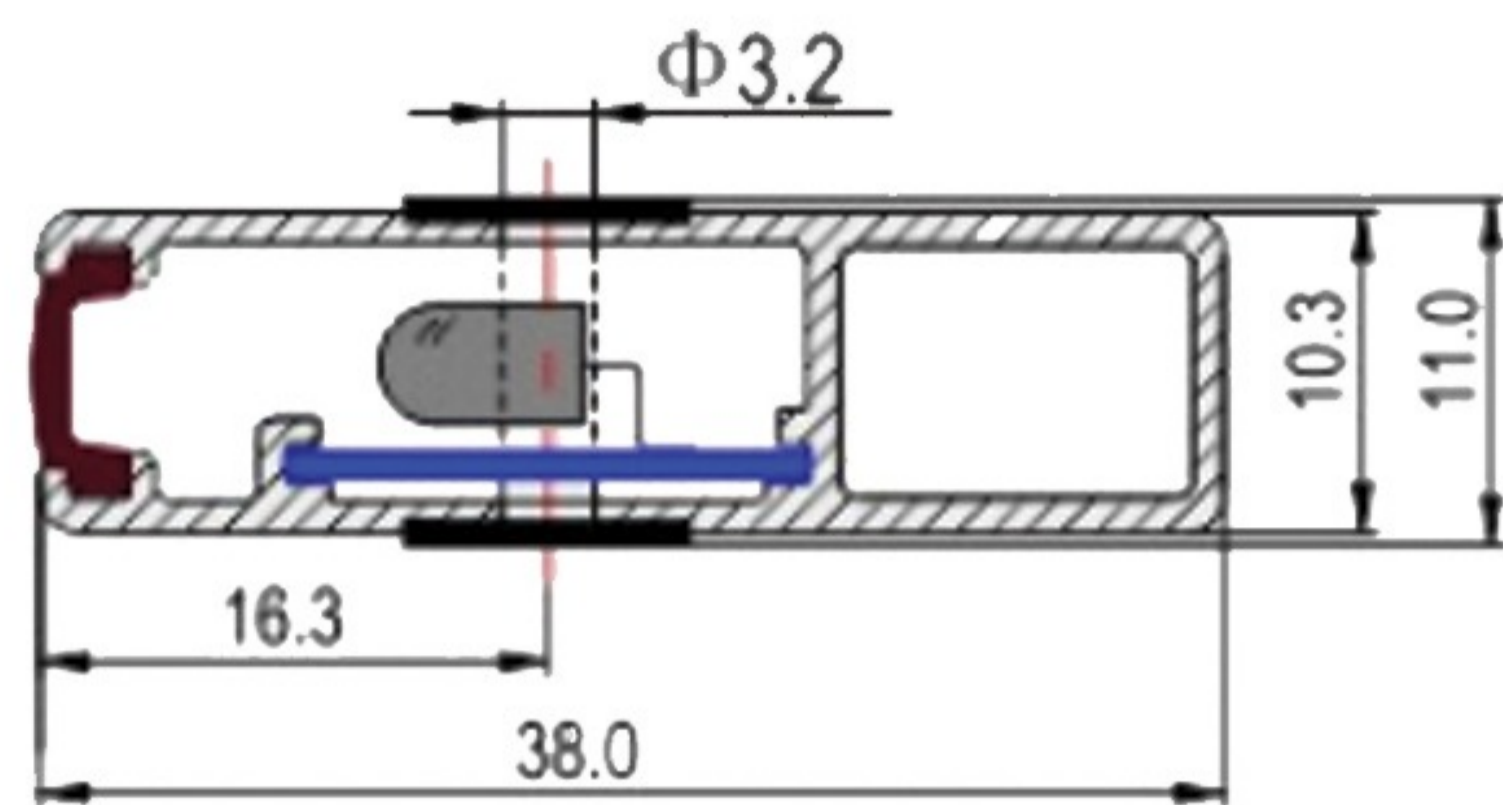


Features & Capabilities:

- High-precision obstacle detection: Reliable and fast performance
- Easy installation and setup: Comes with a complete mounting kit
- Durability in various environmental conditions: Stable performance in diverse temperatures and humidity levels



PG310 Data sheet



Transmitter (TX) and Receiver (RX) Specifications

Number of Infrared Diodes	32
Number of Light Beams	154
Highest Detection Point	1800 mm
Lowest Detection Point	20 mm
Device Dimensions	8×35×2000 mm
Operating Temperature	-20°C to +65°C
Response Time	≤100 ms
Resistance to Ambient Light	Up to 100,000 lux

Misalignment Tolerance

● Vertical	±20 mm
● Horizontal	±3 mm
● Angular	±7°
● Protection Class	IP54

Controller Specifications

Operating Voltage	220VAC
Operating Frequency	50/60 Hz
Current Consumption	≤50 mA
Power Consumption	3 W
Operating Temperature	-20°C to +65°C

Relay Output

● Compatible with elevator control systems	
● Error indicator with red LED	
● Power indicator with yellow LED	
● Protection Class	IP31